



FITTING INSTRUCTIONS

Part Number: **3514120**
Description: **CAMERA RELOCATION KIT**
Suited to vehicle/s:
Optional Fitting Kits: **TOYOTA HILUX WITH FRONT CAMERA**

WARNING

NOTE THE FOLLOWING:

- ◆ This product must be installed exactly as per these instructions using only the hardware supplied.
- ◆ In the event of damage to any bull bar component, contact your nearest authorised ARB stockist. Repairs or modifications to the impact absorption system must not be attempted.
- ◆ Do not use this product for any vehicle make or model, other than those specified by ARB.
- ◆ This product or its fixing must not be modified in any way.
- ◆ The installation of this product may require the use of specialized tools and/or techniques
- ◆ It is recommended that this product is only installed by trained personnel
- ◆ These instructions are correct as at the publication date. ARB Corporation Ltd. cannot be held responsible for the impact of any changes subsequently made by the vehicle manufacturer
- ◆ During installation, it is the duty of the installer to check correct operation/clearances of all components
- ◆ Work safely at all times
- ◆ Unless otherwise instructed, tighten fasteners to specified torque

ARB 4x4 ACCESSORIES

Corporate Head Office

42-44 Garden St
Kilsyth, Victoria
AUSTRALIA, 3137

Tel: +61 (3) 9761 6622
Fax: +61 (3) 9761 6807

Australian enquiries
North & South American enquiries
Other international enquiries

sales@arb.com.au
sales@arb.com.au
exports@arb.com.au

www.arb.com.au

GENERAL CARE AND MAINTENANCE

- As part of any Pre Trip Preparation, or on an annual basis, it is recommended that a thorough visual inspection of the bull bar and camera is carried out, making sure that all bolts and other components are torqued to the correct specification. Also check that all wiring sheaths, connectors, lens and fittings are free of damage. Replace any components as necessary. This service can be performed by your local authorized ARB Stockist.

ATTENTION:



ARB Corporation cannot be held responsible for any change in the performance and any subsequent consequences relating to the relocation of the front grille mounted camera for the Toyota HiLux.

FITTING REQUIREMENTS

REQUIRED TOOLS FOR FITMENT OF PRODUCT:

Screwdrivers, Philips and Flat blade	Metric socket and spanner sets 8-25mm range
Long nose pliers	Side Cutters
Electrical Tape	Torque Wrench (9Nm)

HAVE AVAILABLE THESE SAFETY ITEMS WHEN FITTING PRODUCT:

Protective eyewear		Hearing protection	
--------------------	--	--------------------	--

NOTE: 'WARNING' notes in the fitting procedure relate to OHS situations, where to avoid a potentially hazardous situation it is suggested that protective safety gear be worn or a safe work procedure be employed. If these notes and warnings are not heeded, injury may result.

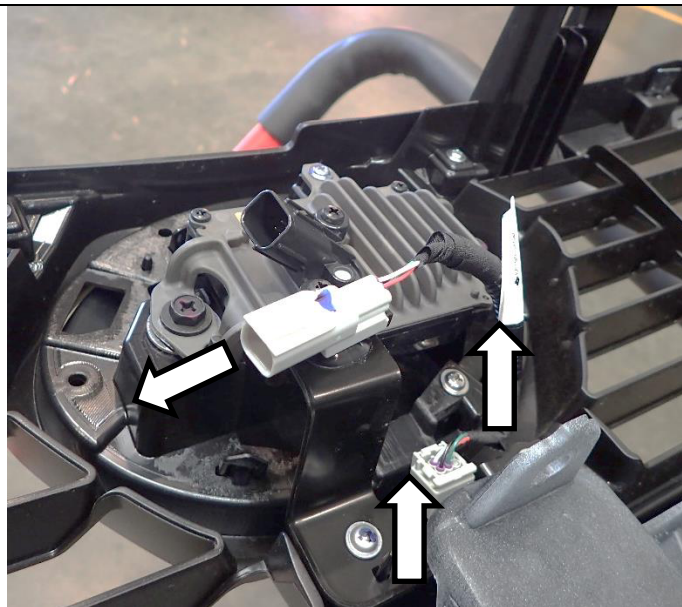
FASTENER TORQUE SETTINGS:

SIZE	Torque Nm	Torque lbft
M6	9Nm	7lbft
M8	22Nm	16lbft
M10	44Nm	32lbft
M12	77Nm	57lbft

PARTS LISTING

APPLICATION.	PART NO.	QTY	DESCRIPTION
	180302	4	CABLE TIE
	3753977	1	CAMERA RELOCATION BRACKET
	4584295	2	WASHER FLAT M6x12 BZP
	6151213	2	BOLT HXHD M6x1.0x20 PC8.8 ZNB480
	6151223	2	NUT HEX NYLOC M6x1.0 ZNB480
	6821451	1	HARNESS EXTENSION TOYOTA

FITTING PROCESS



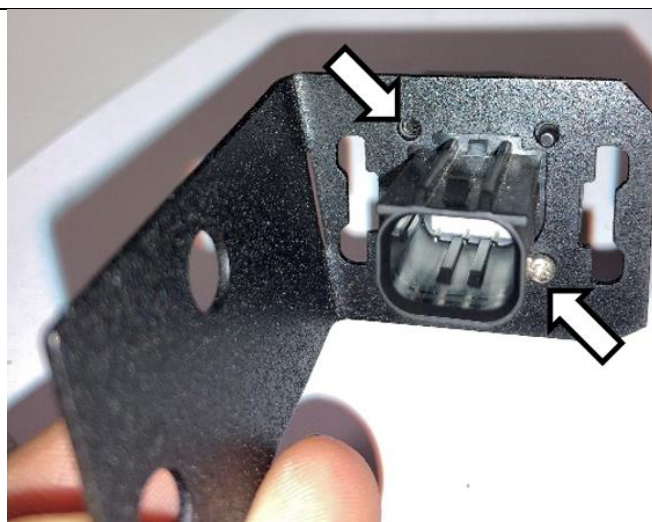
1. Grille must be accessible from the rear as shown.

Disconnect the camera cable and remove the camera module and bracket, removing the two screws shown.

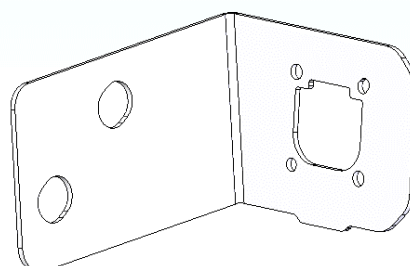


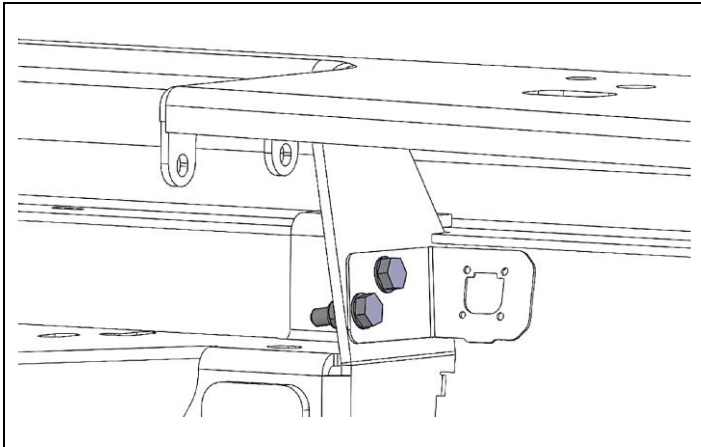
2. Loosen the two small Phillips head screws from the original camera bracket to remove camera from the bracket.

Set aside the screws and camera safely. Discard the bracket.



3. Reinstall the camera into the included bracket (3753977) and fasten with the two original Phillips head screws.



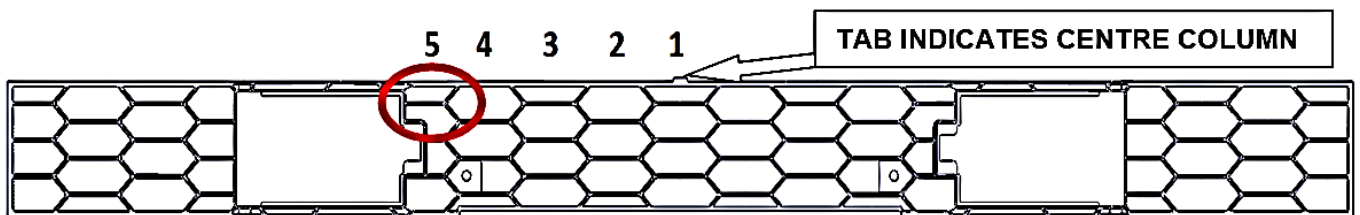


4. Attach camera and bracket assembly to driver's side of winch cradle with M6 hardware as shown.



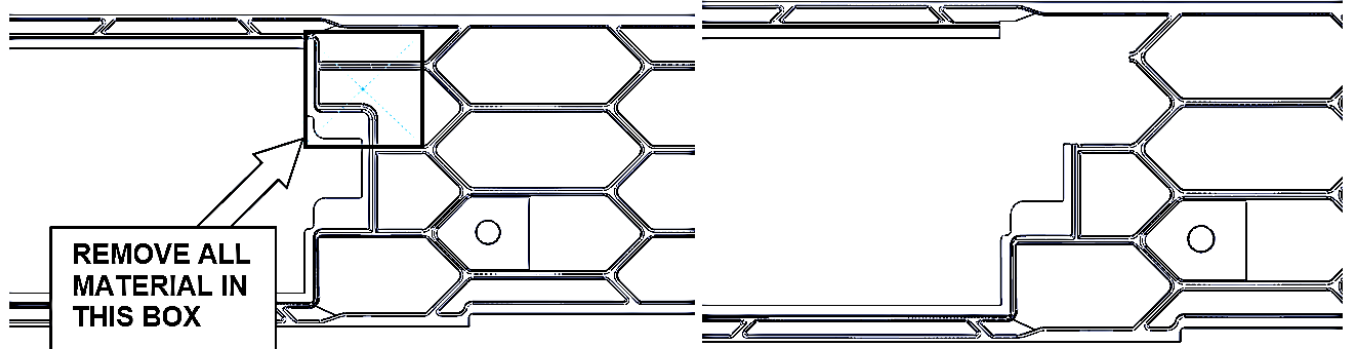
NOTE: Camera is not shown here for clear instruction.

5. Using an oscillating multitool, neatly remove the section of the grille (circled below and detailed on next page) in the 5th column from the centre of the grille.



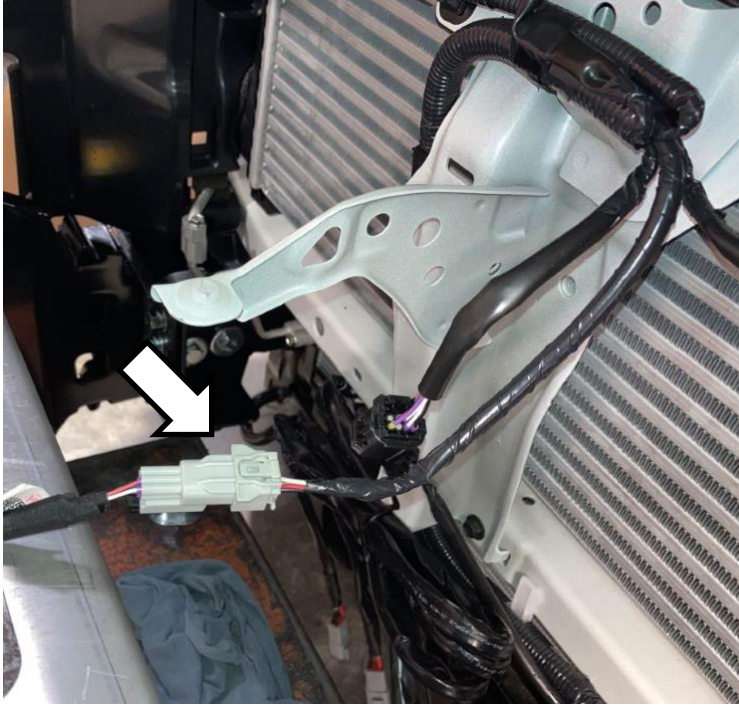
BEFORE:

AFTER:

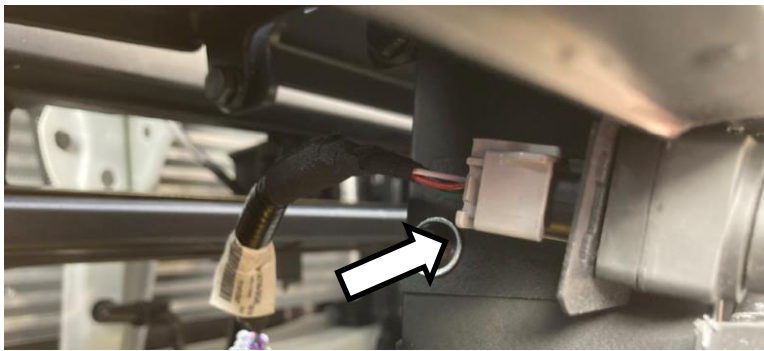


6. Camera will fit inside the cut part of the grille.

Deburr and clean plastic edges.



7. Connect the vehicle end of the included extension harness (6821451) to the original vehicle harness at the front of the engine bay before fitting the bar and/or grille to the vehicle.



8. Plug the remaining end of the extension harness into the camera.

Check camera is connected and functioning with bar fitted and vehicle turned on.