



FITTING INSTRUCTIONS

Product 3532070 LANDROVER WINCH KIT TO SUIT:
Description: 3432300 WINCH BULL BAR AND
3932400 WINCH BUMPER BAR
This kit suits 8000lbs to 12000lbs Warn Winches

WARNING

- ◆ This product must be installed exactly as per these instructions using only the hardware supplied.
- ◆ In the event of damage to any bull bar component, contact your nearest authorised ARB stockist. Repairs or modifications to the impact absorption system must not be attempted.
- ◆ Do not use this product for any vehicle make or model, other than those specified by ARB.
- ◆ This product or its fixing must not be modified in any way.
- ◆ The installation of this product may require the use of specialized tools and/or techniques
- ◆ It is recommended that this product is only installed by trained personnel
- ◆ These instructions are correct as at the publication date. ARB Corporation Ltd. cannot be held responsible for the impact of any changes subsequently made by the vehicle manufacturer
- ◆ During installation, it is the duty of the installer to check correct operation/clearances of all components
- ◆ Work safely at all times
- ◆ Unless otherwise instructed, tighten fasteners to specified torque

ARB 4x4 ACCESSORIES Corporate Head Office

42-44 Garden St
Kilsyth, Victoria
AUSTRALIA 3137

Tel: +61 (3) 9761 6622
Fax: +61 (3) 9761 6807

Australian enquiries
North & South American enquiries
Other international enquiries

sales@arb.com.au
sales@arb.com
exports@arb.com.au

www.arb.com.au

TOOLS REQUIRED:

- BASIC TOOL KIT
- JIG SAW WITH BLADE SUITABLE FOR PLASTIC (OR SIMILAR)
- FILE OR SAND PAPER
- DRILL AND DRILL BIT SET
- SCRIBE

NOTE: 'WARNING' notes in the fitting procedure relate to OHS situations, where to avoid a potentially hazardous situation it is suggested that protective safety gear be worn or a safe work procedure be employed. If these notes and warnings are not heeded, injury may result.

FASTENER TORQUE SETTINGS:

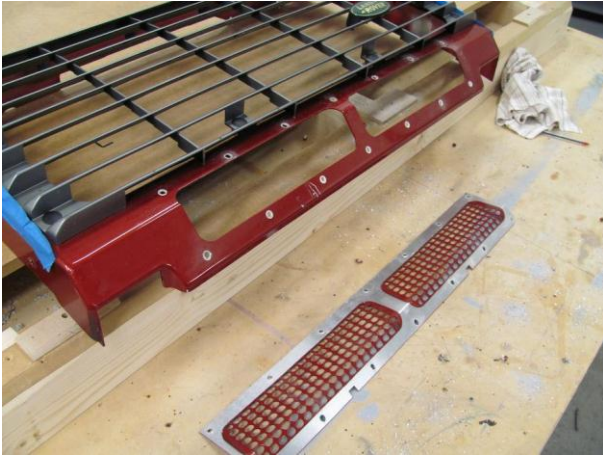
SIZE	Torque Nm	Torque lbft
M6	9Nm	4lbft
M8	22Nm	16lbft
M10	44Nm	32lbft
M12	77Nm	57lbft

Parts List:

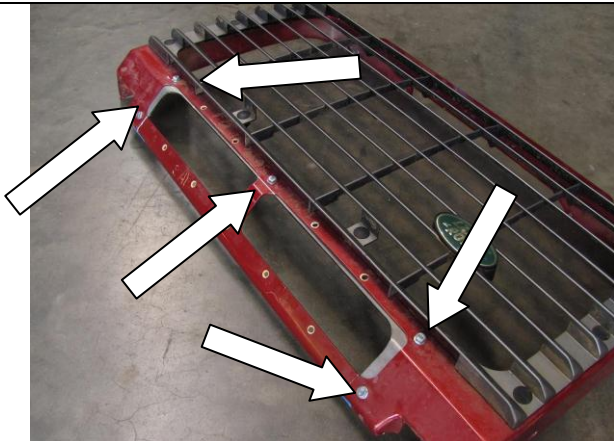
USE	PART No	QTY	DESCRIPTION
CONTROL BOX FITMENT	3756209	1	CONTROL BOX BRACKET
	3756499	1	CONTROL BOX BRACKET
	3751564	1	CONTROL BOX BRACKET (10/12000Lbs Which)
	6151020	2	BOLT M8 x 16mm
	4581044	2	WASHER FLAT M8
	6151132	2	NUT FLANGE M8
	180302	16	CABLE TIES
WINCH (8/9,500LB)	4581040	4	WASHER FLAT 3/8"
	6151074	4	BOLT UNC 3/8" x 1 3/4"
WINCH (10/12,000LB)	4581041	4	WASHER FLAT 7/16"
	6151079	4	BOLT UNC 7/16" x 1 1/2"
GRILLE REINFORCEMENT	4681437	1	GRILLE BRACE
	6151017	5	BOLT M6 x 16
	6151046	5	WASHER FLAT M6
	6151128	5	NUT FLANGE M6
NUMBER PLATE TO BULL BAR	6151017	2	BOLT M6 x 16
	6151046	2	WASHER FLAT M6
	6151128	2	NUT FLANGE M6
	3751313	1	NUMBER PLATE BRACKET
BATTERY TO WINCH CONTROL BOX	BLR3500	1	CABLE RED 3500MM LONG
	BLB3500	1	CABLE BLACK 3500MM LONG



1. Follow fitting instructions 3787081 until the point of winch fitment.
2. Place the grille on a firm surface such as a work bench.
3. Remove all the rivets holding in the lower grill panel using a drill.



4. Remove the lower grill panel and discard.



5. Bolt the grille brace in place of the lower grill panel using 5, M6 hex bolts, M6 flange nuts and M6 washers.



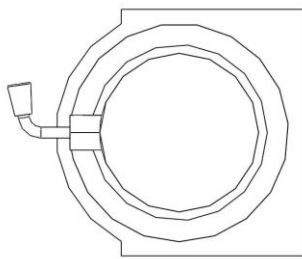
6. Using a scribe mark the inside edges of the grille brace on the grille.
7. Remove the grille brace and set aside.



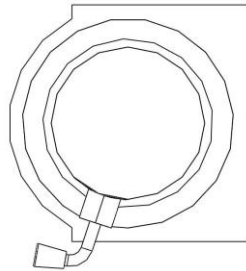
8. Using a jig saw or similar carefully cut along the scribed lines removing the bottom section of the grille.
9. Discard cut piece.
10. Finish the cut edges with a file or sand paper.



11. Bolt the grille brace back into the grille.
12. Set the grille aside until noted in instructions 3787081.

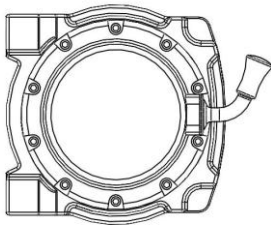


ORIGINAL POSITION

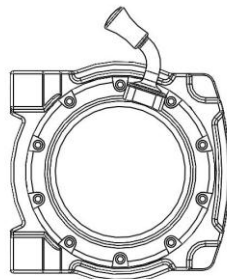


NEW POSITION

13. If fitting a 9500Lbs Warn winch or smaller rotate the gear box as shown.

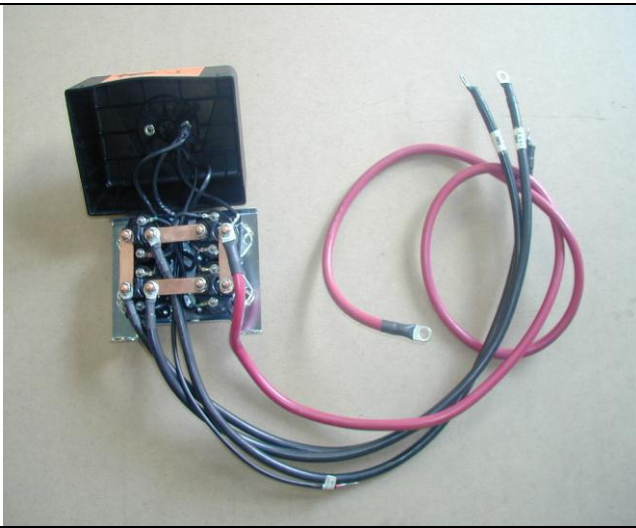


ORIGINAL POSITION

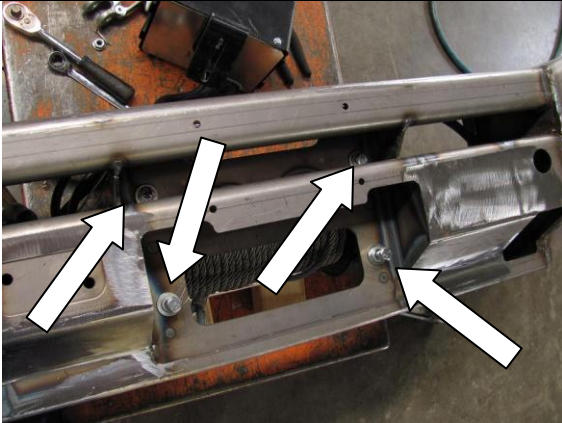


NEW POSITION

14. If fitting a 10000Lbs or 12000Lbs Warn rotate the gear box as shown.



15. Remove the cover from the control box.
16. Remove the red power cable and replace with the 3500mm long red cable supplied in the kit.
17. Replace the cover.
18. Attach the

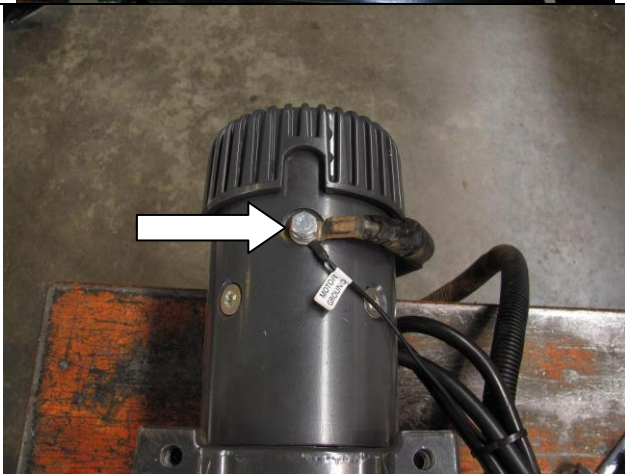


19. Place the winch on a stand with the mounting holes facing upwards and lower the bar onto winch. Align all four holes and secure using 1 1/2" x 7/16" bolts, 7/16" spring washers and 7/16" flat washers on 10/12,000LB winch. When using 8/9,500LB winch, secure using 1 1/2" x 3/8" bolts on top holes and 1 3/4" x 3/8" bolts on lower holes, plus 3/8" spring and flat washers.
20. When all bolts are fitted and finger tight, centralize bolts in holes and tighten top holes only.
21. Remove the lower bolts.



22. Fit roller fairlead into cut out and refit bolts and tighten firmly.

Note: For ease of tightening lower bolts, use a stepped ring spanner to suit bolts size.



23. Attach the 3500mm long black cable from the kit and the small control box earth cable onto the earth screw on the winch motor.



24. Attach the control box to the top of the bar using M8 hex bolts, M8 washers, M8 spring washers and M8 Flange nuts and the following bracket:

Note: Due to the variation in control boxes, 3 different brackets have been supplied with the kit.



25. Connect the cables from the control box to the winch motor as noted in the Warn fitting instructions.



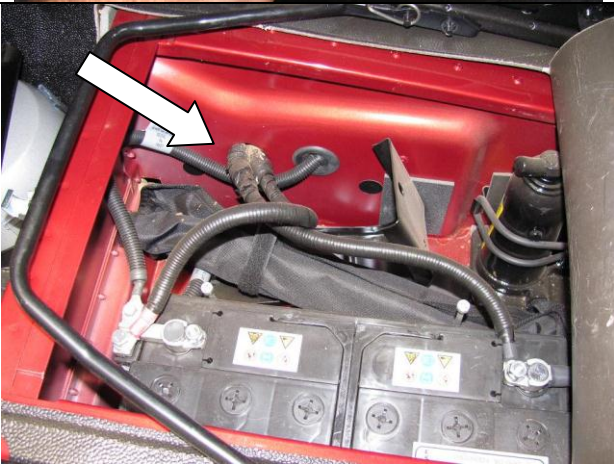
26. Tidy the cables and attach them to the holes in the back of the top pan using cable ties.



27. Place the winch into free spool and pass the winch cable through the roller fairlead.
28. Return the winch to the engaged position.
29. Attach the hook onto the end of the cable and bend the split pin around the hook pin.



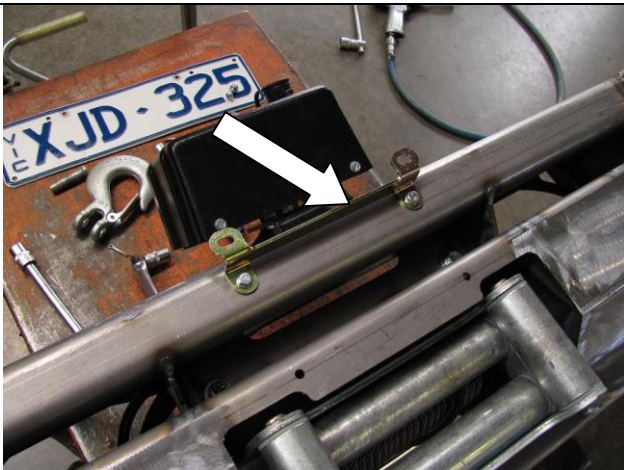
30. Move the bar so that it is close to the final fitted position.
31. Feed the black and red cables along the passenger side chassis rail taking caution not to interfere with any moving parts.
32. Tidy and attach using cable ties supplied.



33. Open the battery compartment under the passenger seat and remove the rubber grommet on the side wall.
34. Pass the cable through the hole.

Note: Protect the cables at the point they pass through the hole using electrical tape or convoluted tube.

35. Attach the black cable to the negative side of the battery
36. Attach the red cable to the positive side of the battery.



37. Attach the winch remote control and check that the winch operates correctly.
38. Attach the number plate bracket to the holes in the front of the top pan using M6 hex bolts, M6 washers and M6 flange nuts.

39. Return to bar fitting instructions 3787081