



FITTING INSTRUCTIONS

Part Number: **3640110**

Product **REAR STEP TOW BAR (RSTB)**

Description:

Suited to **2011 ON FORD RANGER PX AND MAZDA BT50 (BOTH T6 PLATFORM VEHICLES)**

WARNING

REGARDING VEHICLES EQUIPPED WITH SRS AIRBAG:

When installed in accordance with these instructions, the front protection bar does not affect operation of the SRS airbag.

ALSO, NOTE THE FOLLOWING:

- ◆ This product must be installed exactly as per these instructions using only the hardware supplied.
- ◆ In the event of damage to any bull bar component, contact your nearest authorised ARB stockist. Repairs or modifications to the impact absorption system must not be attempted.
- ◆ Do not use this product for any vehicle make or model, other than those specified by ARB.
- ◆ Do not remove labels from this bull bar.
- ◆ This product or its fixing must not be modified in any way.
- ◆ The installation of this product may require the use of specialized tools and/or techniques
- ◆ It is recommended that this product is only installed by trained personnel
- ◆ These instructions are correct as at the publication date. ARB Corporation Ltd. cannot be held responsible for the impact of any changes subsequently made by the vehicle manufacturer
- ◆ During installation, it is the duty of the installer to check correct operation/clearances of all components
- ◆ Work safely at all times
- ◆ Unless otherwise instructed, tighten fasteners to specified torque

ARB 4x4 ACCESSORIES

Corporate Head Office

42-44 Garden St
Kilsyth, Victoria
AUSTRALIA 3137

Tel: +61 (3) 9761 6622
Fax: +61 (3) 9761 6807

Australian enquiries
North & South American enquiries
Other international enquiries

sales@arb.com.au
sales@arbusa.com
exports@arb.com.au

www.arb.com.au

GENERAL CARE AND MAINTENANCE

By choosing an ARB Bar, you have bought a product that is one of the most sought after 4WD products in the world. Your bar is a properly engineered, reliable, quality accessory that represents excellent value. To keep your bar in original condition it is important to care and maintain it following these recommendations:



- Prior to exposure to the weather your bar should be treated to a Canuba based polish on all exposed surfaces. It is recommended that this is performed on a six monthly basis or following exposure to salt, mud, sand or other contaminants.
- As part of any Pre Trip Preparation, or on an annual basis, it is recommended that a thorough visual inspection of the bar is carried out, making sure that all bolts and other components are torqued to the correct specification. Also check that all wiring sheaths, connectors, and fittings are free of damage. Replace any components as necessary. This service can be performed by your local authorized ARB Stockist.

FITTING REQUIREMENTS

REQUIRED TOOLS FOR FITMENT OF PRODUCT:

BASIC TOOL KIT	SOLDERING IRON AND SOLDER
INSULATION TAPE OR HEAT SHRINK	SILICON

HAVE AVAILABLE THESE SAFETY ITEMS WHEN FITTING PRODUCT:

Protective eyewear		Hearing protection	
---------------------------	---	---------------------------	---

NOTE: 'WARNING' notes in the fitting procedure relate to OHS situations, where to avoid a potentially hazardous situation it is suggested that protective safety gear be worn or a safe work procedure be employed. If these notes and warnings are not heeded, injury may result.

FASTENER TORQUE SETTINGS:

SIZE	Torque Nm	Torque lbft
M6	9Nm	7lbft
M8	22Nm	16lbft
M10	44Nm	32lbft
M12 x 1.75	77Nm	57lbft
M12 x 1.25	95Nm	71lbft

PARTS LISTING

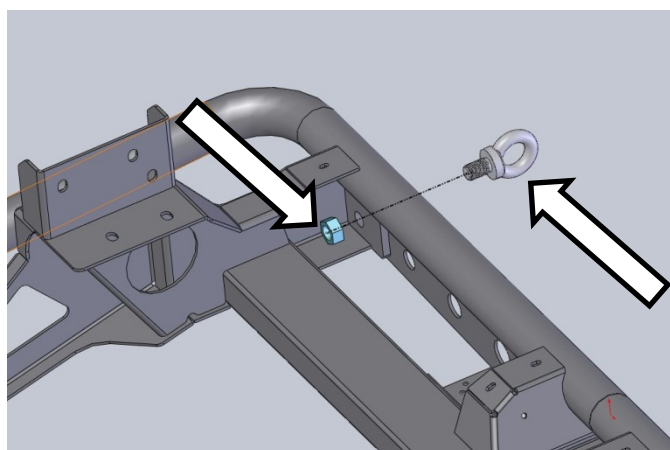
APPLICATION.	PART NO.	QTY	DESCRIPTION
PREPARE BAR	2125461	1	LABLE TOW WARNING
	6821270	1	NARVA 90810 LED LAMP KIT
	6151111	2	EYE BOLT M20
	6151161	2	NUT HEX M20 ZP
	6151200	8	BOLT CFP M6 X 1 X 25 ZP
	6151128	10	NUT FLANGED M6 X 1 ZP
	4581304	2	WASHER FLAT M6 SS
	6151017	2	BOLT M6 X 1 X 15 ZP
	3194340	1	PLATE TREAD RSTB RANGER BT50 T6
	3759003	1	BRACKET LIC PLATE LAMP
	6821116	2	PLASTIC PLUGS
	3194340	1	TREAD PLATE
FIT BAR TO VEHICLE	6151096	6	BOLT M12 X 1.25 X 40 GD 8.8 ZP
	6151255	6	BOLT M12 X 1.75 X 40 GD 8.8 ZP
	4581050	12	WASHER SPRING 1/2 X 3/16 X 3/16 ZP
	4581007	12	WASHER FLAT 1/2 X 1.1/2 X 4 ZP
	3194397	2	WELD NUT PLATE (SINGLE)
	3759002R	1	BRACKET WELD NUT (DOUBLE) RH
	3759002L	1	BRACKET WELD NUT (DOUBLE) LH
	180302	8	CABLE TIES
	4681431R	1	BRACE STRUT RH
	4681431L	1	BRACE STRUT LH
	6151357	2	M10 BOLT ASSEMBLY
	6151321	2	M10 FLANGE NUT
TOW BAR TONGUE	55010	1	TOW TONGUE PIN
	55020	1	TOW TONGUE PIN CLIP
	4761161	1	TOW BAR GOOSE NECK ASSEMBLY
LICENSE PLATE TO VEHICLE	6151017	2	BOLT M6 X 1 X 15 ZP
	4581304	4	WASHER FLAT M6 SS
	6151128	4	NUT FLANGED M6 X 1 ZP
	6151256	2	SCREW BTN HD M6 X 16 SS
	3759003	1	BRACKET LICENSE PLATE

FITTING PROCEDURE



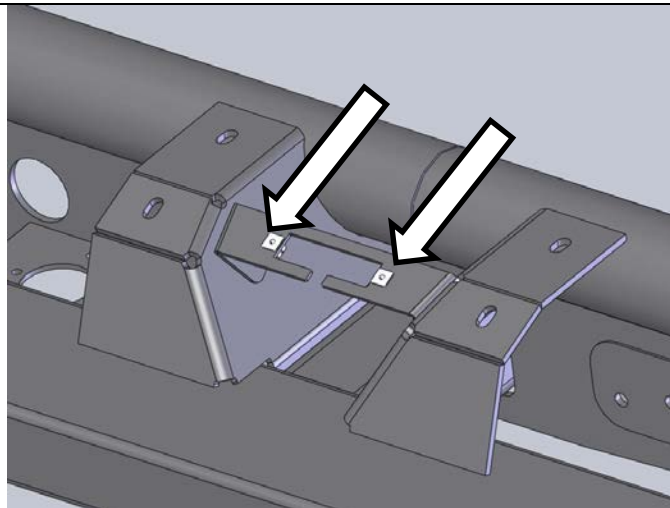
1. If either is fitted, remove the factory bumper bar and tow bar from the vehicle. If the vehicle has a tow wiring harness fitted, carefully place this to the side where it will not be damaged during fitment of the Rear Step Tow Bar (RSTB).

Note: The parking sensor (if fitted) and license plate lamp looms should be carefully unplugged as the bar is removed. The RSTB does not have provision for reversing sensors.

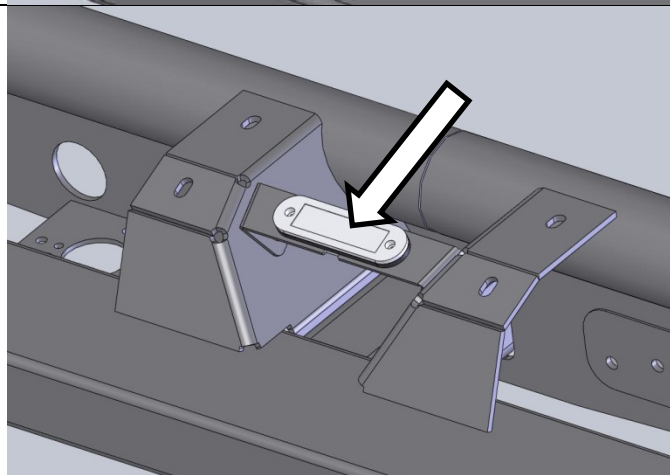


2. Place the RSTB on a flat surface that will not damage its coating.
3. Fix the 2 eye bolts to the bar using 2 M20 hex nuts. Tighten the eye bolts so that the eyes are vertical.

Note: It is recommended that you apply Loctite 262 or equivalent to the eye bolt threads to prevent them loosening and falling off.



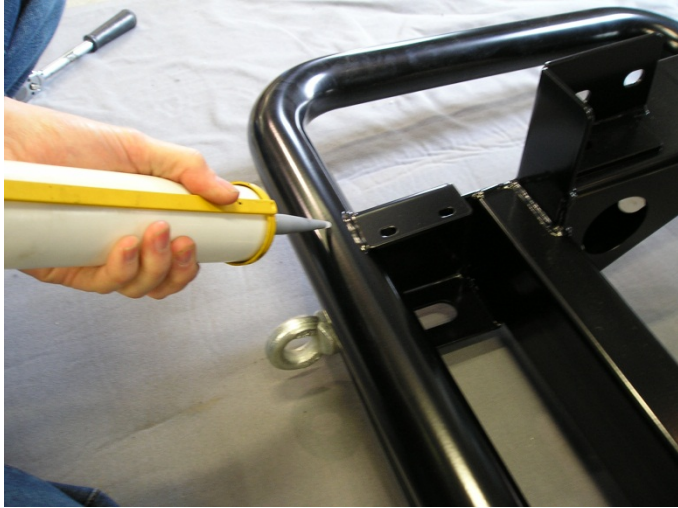
4. Attach the license plate lamp bracket onto the bar as shown using 2 M6 hex bolts, 2 M6 washers and 2 M6 Flange nuts. Leave loose at this stage.
5. Fit the 2 plastic plugs to the lamp bracket.



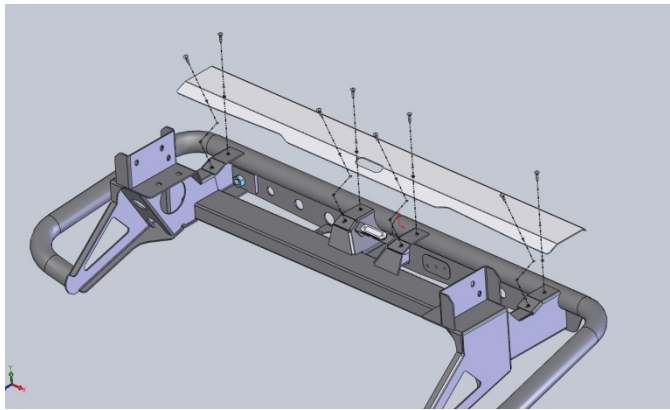
6. Fit the LED lamp to the lamp bracket using the fasteners supplied in the lamp kit.

Note: Do not fit the plastic screw caps at this stage.


FITTING PROCEDURE

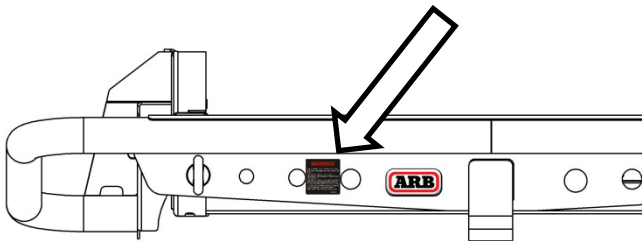


7. Run a bead of silicon along the bar where the step tread plate will sit. This will help prevent vibration.

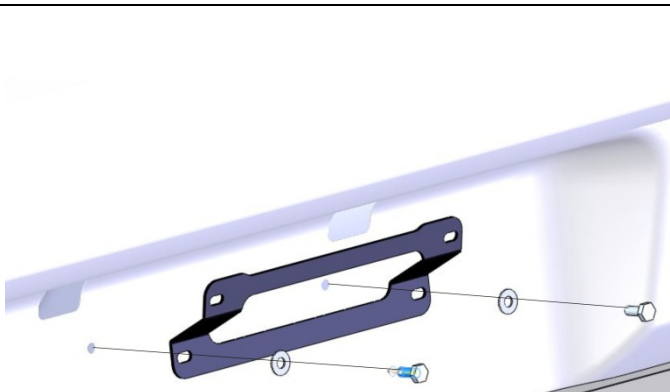


8. Fit the step tread plate to the RSTB using M6 coach bolts and M6 flange nuts taking care not to damage the license plate lamp.
9. Adjust the license plate lamp so that it is positioned evenly in the step tread cavity and tighten all fasteners. Fit the plastic caps supplied with the lamp kit.

 M6 X 1 -9 Nm.




10. Fit the tow warning label to the bar as shown.
Note: This label must not be removed.



11. Fit the license plate bracket to the vehicle as shown using 2 M6 hex bolts, 2 M6 washers and 2 M6 Flange nuts.


Note: The position of the notch in the top of the bracket should be at the top.

 M6 X 1 -9 Nm.

FITTING PROCEDURE



12. Fit the license plate to the license plate bracket using 2 M6 button head screws, 2 M6 washers and 2 M6 Flange nuts.

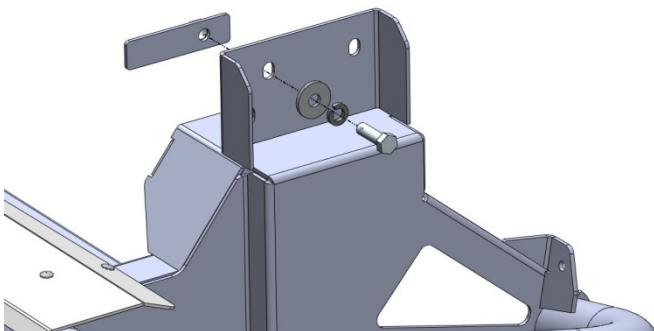
 M6 X 1 -9 Nm.



13. Place the double weld nut brackets into the rear of the chassis rails with the notch facing the outer rear corners of the vehicle.

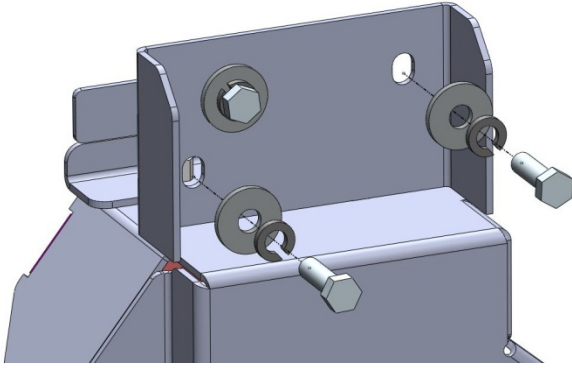


14. With the assistance of other people or a lifting device, lift the RSTB up on to the chassis rails aligning the holes in the bottom of the chassis with those in the verticle surfaces of the RSTB.

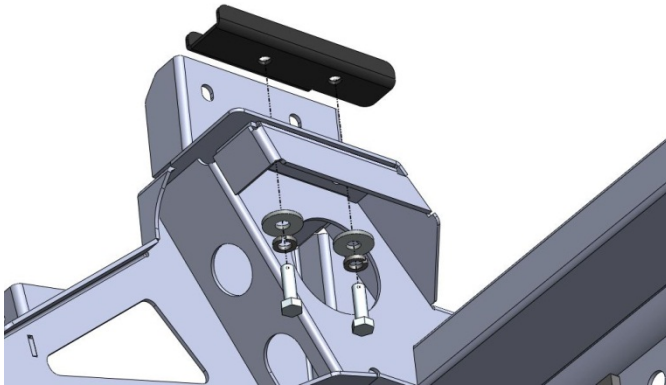


15. Place an M12 x 1.25 (fine pitch) bolt, M12 spring washer and M12 flat washer through each of the upper-rear-most holes and attach using the single weld nut plates.

FITTING PROCEDURE



16. Place 2 M12 x 1.75 (course pitch) bolts, M12 spring washers and M12 flat washers through each of the remaining holes in the bar's vertical mount faces into the captive nuts in the chassis rails.



17. Use M12 x 1.25 (fine pitch) bolts, M12 spring washers and M12 flat washers into the weld nut brackets fitted in the bottom faces of the chassis rails.
18. Position the bar so there is even spacing and tighten all fasteners to the above specified torque.



M12 X 1.75 - 77 Nm.



M12 X 1.25 - 95 Nm.



19. Attach the brace struts to the chassis using M12 x 1.75 (course pitch) bolts, M12 spring washers and M12 flat washers into the captive nuts directly in front of the spring hangers on each chassis rail.

FITTING PROCEDURE



20. Use vise-grips, or a similar clamping device to hold the struts against the brackets on each side of the bar ensuring you have left access to the drill guide holes in the bar.

Tighten the fasteners to the above specified torque.



M12 X 1.75 - 77 Nm.



21. Using a drill with a Ø10mm drill bit, drill through the struts using the holes in the bar as guides.



22. Apply paint or rust preventative to the bare metal.
23. Attach the struts to the bar using M10 bolt assemblies and M10 Flange nuts.
24. Tighten the fasteners to the above specified torque.

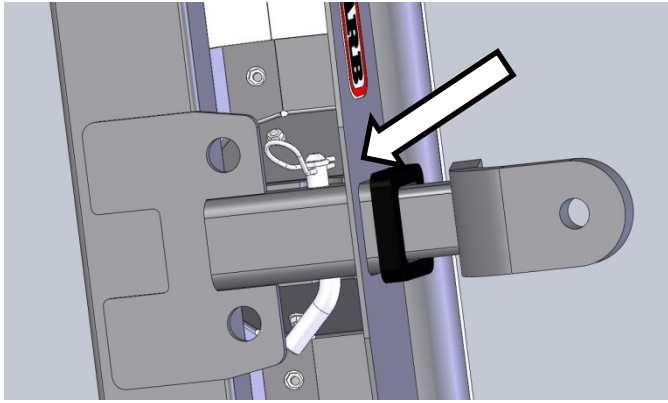


M10 X 1.5 - 44 Nm.

WARNING: Only a factory or approved trailer plug harness should be used when wiring the trailer plug. Failure to do so may result in damage to the vehicles electrical system. For further details please contact either Ford or Mazda service departments.

25. Attach the trailer plug to the trailer plug bracket and tidy all cables with cable ties.
26. Locate the plug for the license plate lamp loom.
27. Ensure the head lights are turned off and cut the plug from the loom and discard. Connect the LED lamp wires to the factory wires using solder and insulation (tape or heat shrink) to separate and protect the joint.
28. Tidy all wiring using cable ties provided.

FITTING PROCEDURE



29. Fit the goose neck assembly to the bar using the supplied pin and clip.

Bar fitted the vehicle

