



FITTING INSTRUCTIONS

Product 3432300 WINCH BULL BAR
Description: 3932400 WINCH BUMPER BAR
Suited to vehicle/s: LAND ROVER 90, 110 AND 130 - 1985 ONWARDS
Winch Fitting Kit: 3532070 (OPTIONAL EXTRA)
Fitting Kit: 6172941

WARNING

- ◆ This product must be installed exactly as per these instructions using only the hardware supplied.
- ◆ In the event of damage to any bull bar component, contact your nearest authorised ARB stockist. Repairs or modifications to the impact absorption system must not be attempted.
- ◆ Do not use this product for any vehicle make or model, other than those specified by ARB.
- ◆ Do not remove labels from this bull bar.
- ◆ This product or its fixing must not be modified in any way.
- ◆ The installation of this product may require the use of specialized tools and/or techniques
- ◆ It is recommended that this product is only installed by trained personnel
- ◆ These instructions are correct as at the publication date. ARB Corporation Ltd. cannot be held responsible for the impact of any changes subsequently made by the vehicle manufacturer
- ◆ During installation, it is the duty of the installer to check correct operation/clearances of all components
- ◆ Work safely at all times
- ◆ Unless otherwise instructed, tighten fasteners to specified torque

ARB 4x4 ACCESSORIES

Corporate Head Office

42-44 Garden St
Kilsyth, Victoria
AUSTRALIA 3137

Tel: +61 (3) 9761 6622
Fax: +61 (3) 9761 6807

Australian enquiries
North & South American enquiries
Other international enquiries

sales@arb.com.au
sales@arb.com.au
exports@arb.com.au

www.arb.com.au

GENERAL CARE AND MAINTENANCE

By choosing an ARB Bar, you have bought a product that is one of the most sought after 4WD products in the world. Your bar is a properly engineered, reliable, quality accessory that represents excellent value. To keep your bar in original condition it is important to care and maintain it following these recommendations:

- Prior to exposure to the weather your bar should be treated to a Canuba based polish on all exposed surfaces. It is recommended that this is performed on a six monthly basis or following exposure to salt, mud, sand or other contaminants.
- As part of any Pre Trip Preparation, or on an annual basis, it is recommended that a thorough visual inspection of the bar is carried out, making sure that all bolts and other components are torqued to the correct specification. Also check that all wiring sheaths, connectors, and fittings are free of damage. Replace any components as necessary.

Please contact local Authorised ARB Stockist if you would like to have this service carried out on your behalf.

HAVE AVAILABLE THESE TOOLS WHEN FITTING PRODUCT:

BASIC TOOL KIT

ELECTRICAL TAPE

HACKSAW OR JIG SAW SUITABLE TO CUT PLASTIC

DRILL WITH 10MM HSS DRILL BIT

NOTE: 'WARNING' notes in the fitting procedure relate to OHS situations, where to avoid a potentially hazardous situation it is suggested that protective safety gear be worn or a safe work procedure be employed. If these notes and warnings are not heeded, injury may result.

FASTENER TORQUE SETTINGS:

SIZE	Torque Nm	Torque lbft
M6	9Nm	4lbft
M8	22Nm	16lbft
M10	44Nm	32lbft
M12	77Nm	57lbft

PARTS LIST

USE	PART No	QTY	DESCRIPTION
CHASSIS BRACKET TO CHASSIS	6151357	2	M10 SEMS HEX BOLT ASSEMBLY
	6151321	2	M10 FLANGE NUT
	6151322	2	M10 NYLOCK NUT
	3758010R/L	1	BRKT ASSY CHASSIS
	4581070	2	WASHER FLAT M12
CHASSIS BRACKET TO BULL BAR	6151357	2	M10 SEMS HEX BOLT ASSEMBLY
	6151321	2	M10 FLANGE NUT
	6151135	4	M12 NUT
	4581050	4	WASHER SPRING ½"
	6151096	4	BOLT M12 x 40mm
	6151097	4	BOLT M12 x 50mm
	4581070	8	WASHER FLAT M12
	5848380	6	PACKER SHIM
NUMBER PLATE TO BULL BAR	6151017	2	BOLT M6 x 16
	6151046	2	WASHER FLAT M6
	6151128	2	NUT FLANGE M6
INDICATORS TO BULL BAR	3500080	1	INDICATOR KIT
	180302	4	CABLE TIES



1. Open the bonnet and remove the grille from the vehicle by removing the 4 screws on the top of the grille and the 2 screws on the sides of the grille.
2. Store the grille and screws in a safe place.



3. Remove and retain the number plate from the bumper bar.
4. Remove and retain the 4 bolts from the top of the factory bumper bar.
5. Remove the factory bumper.



6. Remove and retain the nut plates from the bumper bar.
7. If fitted, remove and discard the nut plate retaining clip.
8. Discard the bumper bar.



9. Remove and retain the 2 lower front bolts and washers holding the factory protection bar to the chassis ends.
10. Discard the factory nylock nuts.



11. Place the right hand chassis bracket onto the right hand chassis end as shown.
12. Attach using the 2 bolts, washers and nut plates removed in steps 4-6.
13. Repeat on the left hand side.

Note: Leave fasteners loose at this stage.

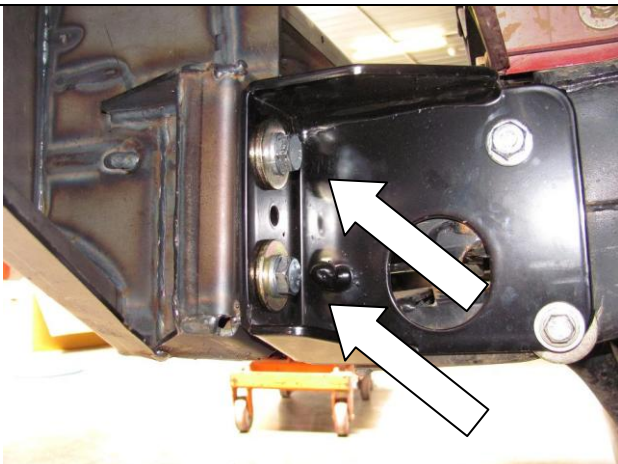


14. Place the bar so that the mounts are aligned with the mount holes in the back of the bar.
15. If required due to body variation, place shims in between the mount and the bar to give a minimum clearance of 5mm.

Note: Only use a maximum of 3 shims per side

16. Loosely attach the bar to the mounts using 4 M12 x 1.25 x 40 Hex Bolts OR 4 M12 x 1.25 x 50 Hex Bolts, 4 M12 Spring Washers, 8 M12 flat washers and 4 M12 x 1.25 nuts.

Note: To determine if the 40mm or 50mm bolts should be used, there should be a minimum of 3 FULL threads protruding past the nut when the bar, mount and final shim qty is assembled and tightened.

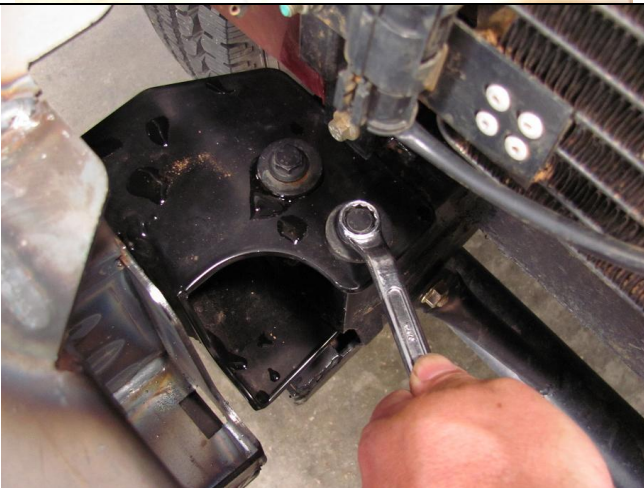


17. Align the bar so that it is level, central to the vehicle. And at a desired height.

Note: The weight of the bar should still be taken by the stand or trolley noted in step 14.

18. Tighten the M12 fasteners until firm.

Note: The M12 fasteners need to be tight enough to hold the mounts in position for further steps.



19. Tighten the 4 M10 bolts noted in step 4 to the above noted torque setting.



20. Undo the M12 fasteners and remove the bar from the vehicle being careful not to move the mount brackets so they remain in place.



21. Push the factory protection bar down and away from the chassis rails.
22. Using a drill with a 10mm bit suitable for steel, drill the lower mount pinning hole, using the hole in the chassis rails as a guide, drilling from the inside, outward.
23. Use paint or anti rust on the bare metal of newly drilled hole.
24. Repeat both sides.



25. Pull the factory protection bar back into position.



26. Place an M12 washer in between the mount bracket and the chassis rail as a packer and hold in place using the bolts and washers removed in step 9
27. Secure using the 2 new M10 nylock nuts from the fitting kit.
28. Tighten to the above specified torque settings.

Warning: Do not re-use the factory nylock nuts.



29. Drill through the chassis rails with the 10mm drill bit using the upper holes in the mount bracket as a guide.
30. Repeat both sides.
31. Use paint or anti rust on the bare metal of newly drilled hole.

Note: Only drill through one side of each rail.



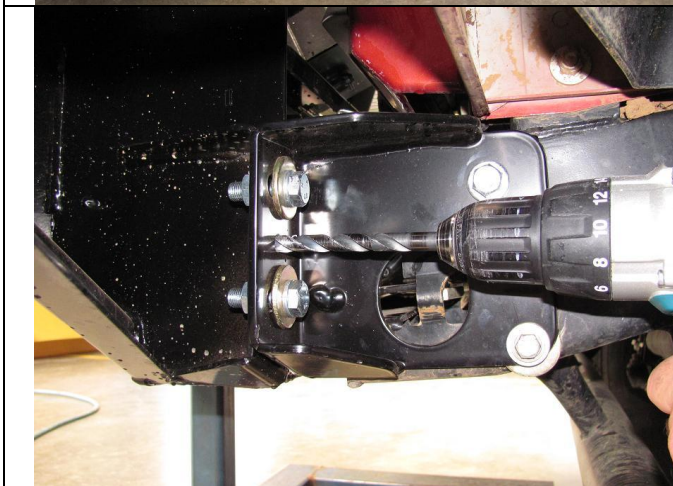
32. Place an M10 SEMS bolt assembly through each of the holes and secure using M10 flange nuts.
33. Tighten to above specified torque setting.

Note: If fitting a winch, it should be done now using fitting kit 3532070 and fitting instructions 3787082

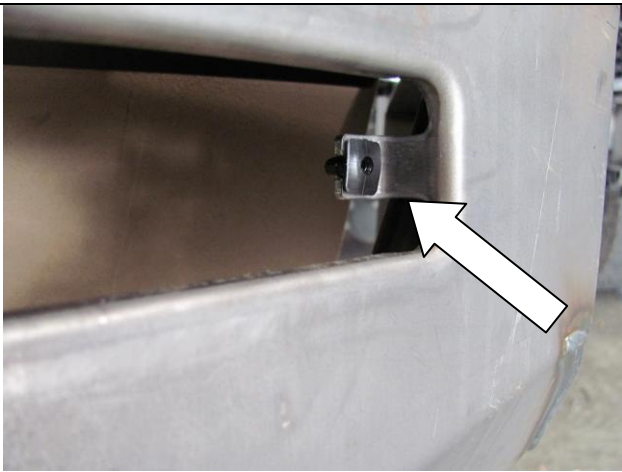
34. Replace the grille using the screws removed in step 1.



35. Place the bar back into position and re-secure using the M12 fasteners and shims if required.
36. Locate bar as per step 16.
37. Tighten all fasteners to above specified torque setting.



38. Using the holes in the mount brackets as a guide, drill pinning holes through the bar mounts.
39. Place an M10 SEMS bolt assembly through each of the holes and secure using M10 flange nuts.
40. Tighten to above specified torque setting.



41. Place the plastic plugs supplied in the indicator lamp kits into the grooves in the tags in the bars indicator cavities.
42. Repeat both sides



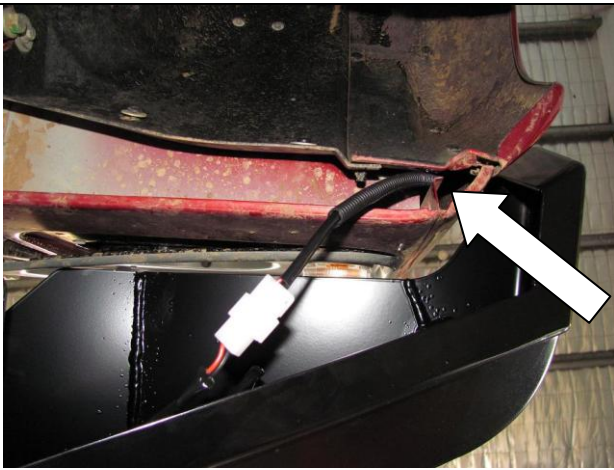
43. Attach the indicator lamps to each side of the bar using the self tapping screws provided with the lamps.



44. Attach one of the looms to each of the indicators.
45. Cover the looms with the convoluted tube supplied.

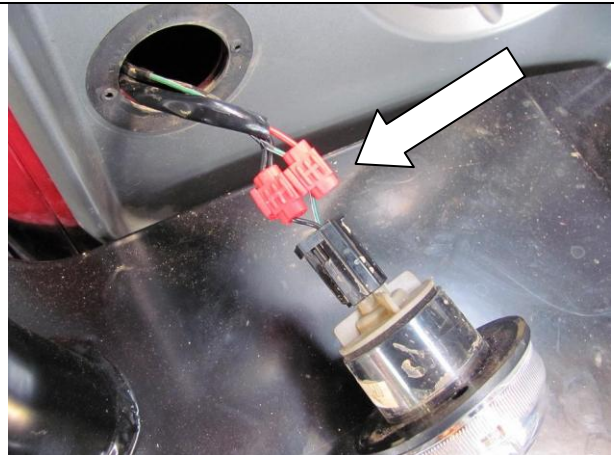


46. Undo the 2 screws hold the indicators onto each side of the vehicle and pull the indicator housings away from the vehicle.



47. Pass the looms up under the front of the vehicle on each side and in between the wheel arch liners and the body until they are visible through the holes made by the removal of the indicator lamps.

Note: Ensure the convoluted tube is covering the section of the loom that passes between the wheel arch liner and the body.



48. Using the scotch locks provide connect the looms to the vehicles indicator wiring. Connect black with black and red with green.

49. Cover the joins with electrical tape.

50. Test the wiring by switching the vehicles indicators on and checking to see if the new bar lamps work correctly.

51. Replace the indicators onto the vehicle.

52. Tidy the wiring using cable ties.



53. If a winch is not fitted, fit the number plate to the lower 2 holes above the winch cavity using M6 hex bolts, M6 washers and M6 flange nuts.

54. If a winch is fitted, fir the number plate to the bracket installed in the winch installation using the same hardware as noted above.

55. Driving lights can now be fitted to the vehicle.



Winch Bull Bar fitted to vehicle



Winch Bumper fitted to vehicle

