



FITTING INSTRUCTIONS

Part Number: **565 0200**

Product **ARB REAR BAR WITH TOW POINTS**

Description:

Suited to **JK JEEP WRANGLER AND JEEP UNLIMITED**
vehicle/s:

WARNING

- ◆ This product must be installed exactly as per these instructions using only the hardware supplied.
- ◆ In the event of damage to any rear bar component, contact your nearest authorised ARB stockist.
- ◆ Do not use this product for any vehicle make or model, other than those specified by ARB.
- ◆ Do not remove labels from this rear bar.
- ◆ This product or its fixing must not be modified in any way.
- ◆ The installation of this product may require the use of specialized tools and/or techniques
- ◆ It is recommended that this product is only installed by trained personnel
- ◆ These instructions are correct as at the publication date. ARB Corporation Ltd. cannot be held responsible for the impact of any changes subsequently made by the vehicle manufacturer
- ◆ During installation, it is the duty of the installer to check correct operation/clearances of all components
- ◆ Work safely at all times
- ◆ Unless otherwise instructed, tighten fasteners to specified torque

IMPORTANT

Optional number plate relocation & factory mud flap fitting kit #5750070 is required:-

- ◆ If the vehicle has the registration plate fitted to the centre of the bumper, then it must be relocated when fitting ARB rear bar
- ◆ In the case where due to local government regulations, it's a legal requirement to re-fit the mud flaps. Please check the legal requirements with your local authority.

ARB 4x4 ACCESSORIES

Corporate Head Office

42-44 Garden St
Kilsyth, Victoria
AUSTRALIA 3137

Tel: +61 (3) 9761 6622
Fax: +61 (3) 9761 6807

Australian enquiries
North & South American enquiries
Other international enquiries

sales@arb.com.au
sales@arbusa.com
exports@arb.com.au



www.arb.com.au

FITTING REQUIREMENTS

REQUIRED TOOLS FOR FITMENT OF PRODUCT:

Basic Tool Kit	Metric and A/F Socket Set
10.0mm Drill Bit	Electric Drill
Hacksaw/Jigsaw	

HAVE AVAILABLE THESE SAFETY ITEMS WHEN FITTING PRODUCT:

Protective eyewear 	Hearing protection 
---	---

NOTE: 'WARNING' notes in the fitting procedure relate to OHS situations, where to avoid a potentially hazardous situation it is suggested that protective safety gear be worn or a safe work procedure be employed. If these notes and warnings are not heeded, injury may result.

FASTENER TORQUE SETTINGS:

SIZE	Torque Nm	Torque lbft
M6	9Nm	7lbft
M8	22Nm	16lbft
M10	44Nm	32lbft
M12	77Nm	57lbft

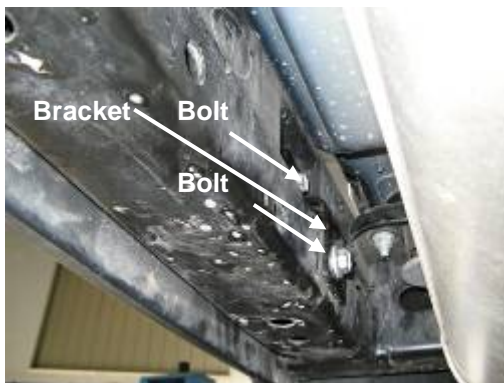
Fitting Kit 6172556 PARTS LISTING

APPLICATION.	PART NO.	QTY	DESCRIPTION
Bolt bar to captive nuts in chassis	6151217	4	M10 x 1.5 x 50 Hex Head Bolt
	4581048	4	M10 spring washer
	3199927	2	Plate Washer
Bolt bar to cage nuts	3757853	2	Brkt Chassis Cage Nuts JK JEEP
	6151305	2	M12 x 1.75 Cage Nut
	6151255	2	M12 x 1.75 x 40 hex bolt
	4581064	2	M12 x 4.2 x 2.6 spring washer
	4581007	2	1/2 B/washer
	6151357	4	M10 x 1.5 x 30 SEMS bolt
	6151302	4	M10 x cage nut
Other	3163009	2	Jack mount plugs
	6821166	2	Reflector Rear
	6781415	1	Grip Tape 70mm x 400mm

REMOVAL OF BUMPER



1. **NOTE: To fit the ARB Rear Bar, the vehicles plastic inner guard liner must be cut. This is done at stage 4.**



2. Removing the plastic bumper from the vehicle.

Firstly remove the spare tyre from the rear door.

To remove the bar, remove the 4 bolts (2 each side) found either side of the vehicle. Then remove the 4 bolts and 2 brackets found on the inside at the top of the bar. Retain at least 4 of these bolts for later use.

Also undo the connector for the fog light loom (if fitted) located on the chassis next to the muffler, and also remove the cable clips holding the loom to the chassis.



3. The bar can now be slid off rearwards. You may need 2 people to avoid damaging the vehicle

If fitting a factory tow bar, fit now whilst bar is off and break out lower section to clear tow bar before fitting rear bar.

If retaining factory centre recovery hook the lower section does NOT need to be broken out.

VEHICLE PREPARATION



4. The plastic inner guards can now be trimmed.

Measure 60mm up from the bottom edge of the inner guard, and draw a horizontal line as shown.

This section can be cut off using an air hacksaw or similar, but the section closest to the edge of the flare could be cut first with side cutters to avoid damaging the flare.

Repeat process on other side



5. Now using 2 people, fit the bar to the vehicle. The chassis brackets slide either side and sit on top of the chassis rails

Align the bar to the correct position maintaining a minimum of 20mm clearance from the top of the bar to the underside of the flare and fix using factory bolts with the plate washer as shown left.

Then using existing M10 holes in plate, mark the positions to drill the chassis on each side.



VEHICLE PREPARATION



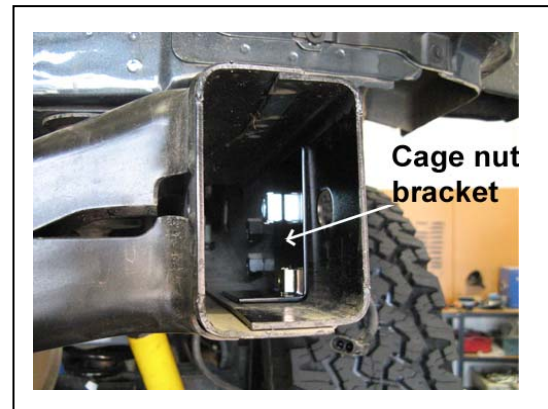
6. Now remove the bar and drill the holes using a 10mm drill bit. The holes may need cleaning with a file to remove any burrs.
7. Touch up bare surfaces with rust resistant paint



Warning: Drilling operations can result in flying metal debris, safety glasses should be

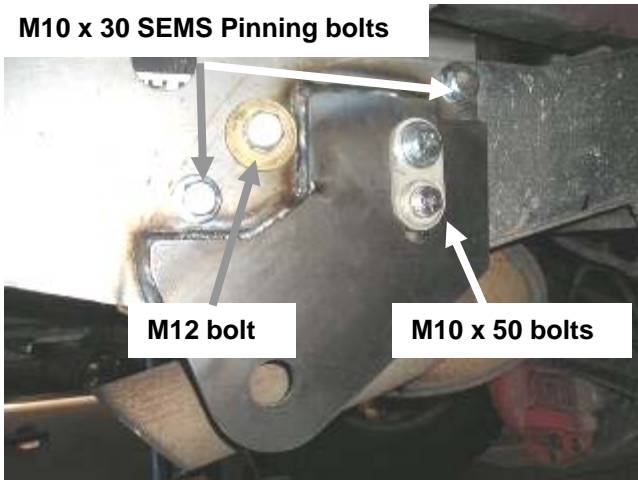


8. Take the steel bracket and insert the M12 and M10 cage nuts as shown creating a left and right set (see opposite).
9. The brackets sit inside the chassis rails with the M10 cage nut on the long thin section towards the front of the vehicle.



FITTING REAR BAR

M10 x 30 SEMS Pinning bolts



10. Now carefully refit the bar, and firstly attach using M10 x 50 bolts, spring washer and plate sets. Then take the M12 bolt and large washer and screw into cage nut inside chassis. You may need to hold the bracket inside the chassis rail with a long file or similar, do not fully tighten. Finally insert the 2 x M10 SEMS bolts, screwing into cage nuts, adjust bar maintaining the 20mm clearance between the top of the bar and the underside of the flare and fully tighten all bolts to specified torque.



11. With the bar fitted to the vehicle, now apply the grip tape to the centre of the vehicle, making sure to align centrally



12. Now fit the Jack mount plugs with the thicker section of the plug to the bottom, as shown below.



FITTING REAR BAR



13. If the vehicle was originally fitted with reflectors in the bumper, then the reflectors provided in the fitting kit should be fitted to the vehicle in the location shown left.

FINAL PRODUCT ON VEHICLE

