

ARB AIR LOCKER *Air Operated Locking Differentials*

RD166 Dana 60HD,35 SPL,4.56 & UP

Specs:

Axle Spline	35 tooth, Ø38.1mm [1.50"]
Ratio Supported	4.56:1 & up
Ring Gear ID	162.0mm [6.38"]
Ring Gear OD	248mm [9.75"]
Ring Gear Bolts	12 bolts on Ø191mm [7.50"]
Ring Gear Torque	149Nm [110 ft-lb]
Backlash	0.15-0.25mm [0.006-0.010"]
Bearing Cap Torque	108Nm [80 ft-lb]

ITEM #	QTY	DESCRIPTION	PART #	NOTES
1	2	SEAL HOUSING O-RING	160248	1
2	1	SEAL HOUSING ASSEMBLY	082104	
3	1	SHIM KIT	SHK001	
*	2	MASTER SHIM	SEE NOTE	4
4	1	BONDED SEAL	160703	
5	1	CLUTCH GEAR	050807	
6	1	SPIDER BLOCK	070402	
7	1	LONG CROSS SHAFT	061501	
8	1	SIDE GEAR	SEE NOTE	3
9	2	COUNTERSUNK SCREW	200214	
10	3	CROSS SHAFT RETAINING PIN	120601	
11	2	TAPERED ROLLER BEARING	NOT SUPPLIED	2
12	1	FLANGE CAP ASSEMBLY	028605	
13	12	RETURN SPRING	150107	
14	1	SPLINED SIDE GEAR	SEE NOTE	3
15	2	SHORT CROSS SHAFT	061601	
16	4	PINION GEAR	SEE NOTE	3
17	4	PINION THRUST WASHER	151113	
18	2	SIDE GEAR THRUST WASHER	151007	
19	1	DIFFERENTIAL CASE	013205	
*	1	BULKHEAD FITTING KIT (O-RING TYPE)	170111	
*	1	PUSH-IN FITTING (5mm to 1/8" BSPP)	170201	
*	1	AIR LINE (5mm DIA X 6m LONG)	170301	
*	1	NIPPLE (1/8" to 1/8" BSPT)	170501	
*	1	SOLENOID VALVE (12V)	180103	
*	1	SWITCH	180209	
*	1	SWITCH COVER (FRONT)	180210	
*	1	SWITCH COVER (REAR)	180211	
*	10	CABLE TIE	180301	
*	1	WARNING LABEL	210101	
*	1	BUMPER STICKER	210102	
*	1	OPERATION & SERVICE MANUAL	210200	
*	1	INSTALLATION GUIDE	2102166	

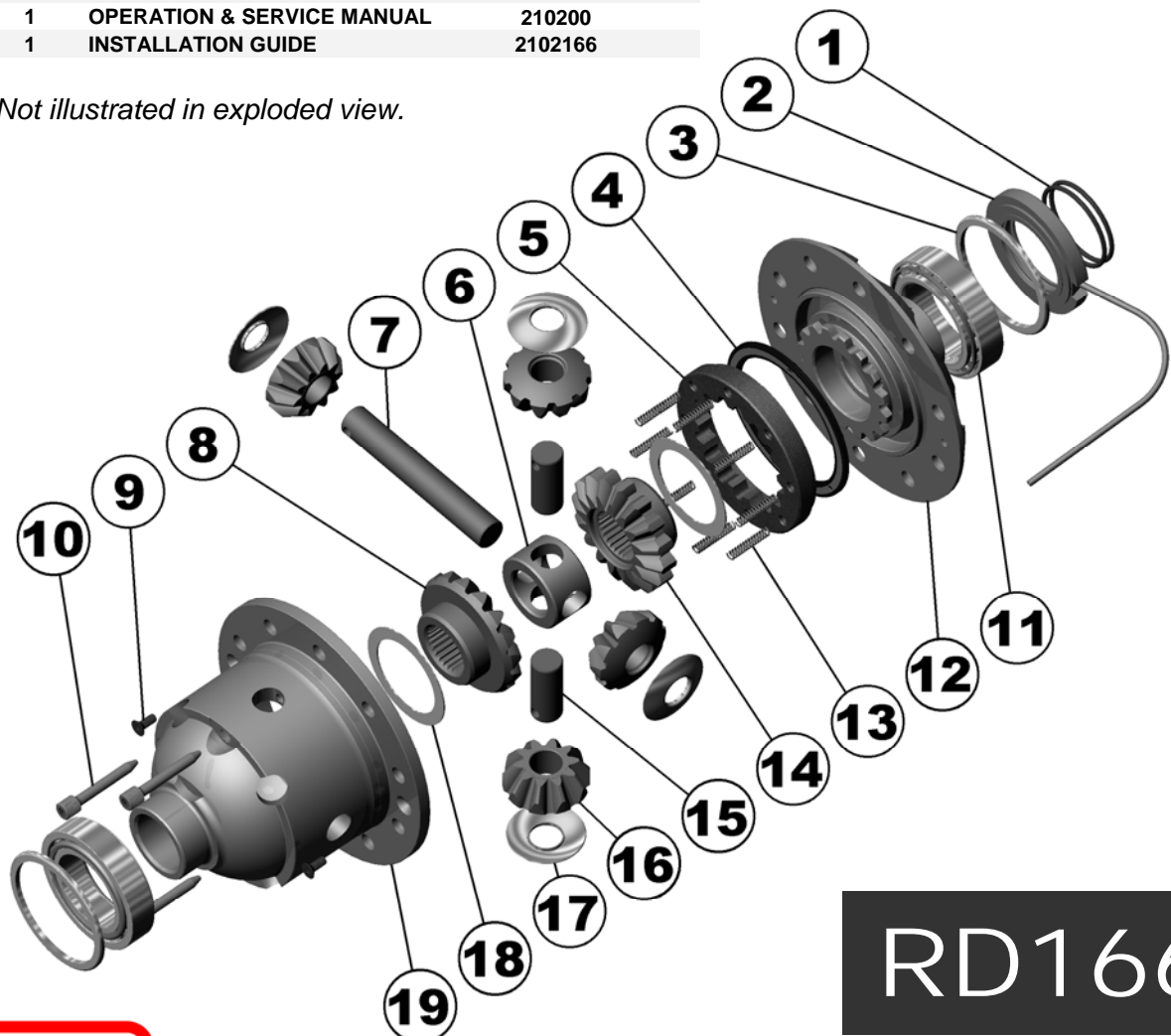
Notes:

- For replacement O-rings use only BS140 Viton 75.
- For replacement bearing use Timken part # 387A / 382S.
- Available only as complete 6 gear set # 728K041

For ratios of 4.10:1 and down refer to RD167 ([Section 2.167](#))

For Dana 60HD C-clip model refer to RD42 ([Section 2.42](#))
- Use 150331 (4.0mm thick) for diff with thin bearing cup.

* Not illustrated in exploded view.



RD166

